

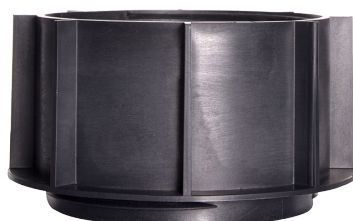


Jouplast®

EXTENSION

HEIGHT 60 MM
FOR CLEMAN® RISER PEDESTAL

TECHNICAL DATA SHEET



BENEFITS

- Optimised stability: extension to be screwed between the base and the nut.
- Stackable up to 4 extensions.

APPLICATIONS

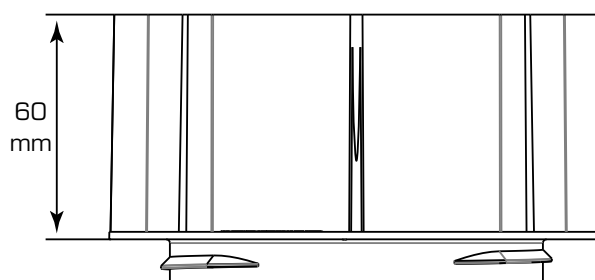
- Increase the height of CLEMAN® standard and self levelling risers.

RESISTANCE

- Resistance to crushing test exceeds 1T.

RECOMMENDATIONS

- Terraces and patios for pedestrian use only.
- Outdoor use only.
- Do not use more than 4 extensions.
- To screw on the riser basis.
- Always follow paving manufacturer recommendations to ensure the suitability of paving products for use with riser pedestals and the number of risers per m² to use. Qualification of compulsory "SELF-SUPPORTING" slabs, of class T7, T11 according to standard EN 1339:2004-02.



TECHNICAL DETAILS

- Material: recycled polypropylene
- Colour: black
- Diameter: 105 mm
- Height: 60 mm
- Weight: 114 g
- Resistance to temperature from -30°C to +60°C
- UV and frost resistant

PACKING

- Box of 40 parts (12 boxes per pallet - Stackable)

Document protected by copyright. Any reproduction, copy, extraction, reuse in others publications, translation or adaptation, display, distribution or modification, in whole or in part, without the written consent of TMP CONVERT is strictly prohibited and will be sanctioned. TMP CONVERT reserves the right to add, modify or delete information to any time without warning.



www.jouplast.com



FT_SHAL_23D4_FR