



Jouplast®

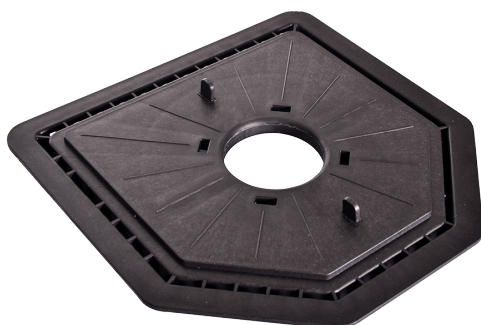
# SIDE FINISHING PLATE

FOR CLEMAN® RISER PEDESTAL



TECHNICAL DATA SHEET

© Helène BARON



## BENEFITS

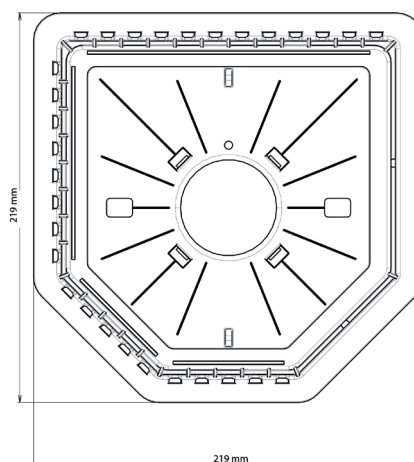
- Specific shape, ideal for making 45° cut sections.
- 4 mm spacers can be split using a tool.
- Can be used with small dimensions tiles: 20 cm.
- Patented glue trap system.
- Compatible with Jouplast® finishing profiles.

## APPLICATIONS

- Provides a neatly edge finishing of terraces built on CLEMAN® riser pedestals (with or without paving tile cutting).
- Along the wall, it supports and stabilises the slab specially cut to size for attachment to the wall.
- Used on terrace edges and corners in combination with the lateral riser support, it provides vertical support for a plinth.
- Allows different configurations: with a finishing profile, finish with a plinth, invisible finishing, to create a step.

## RECOMMENDATIONS

- Terraces and patios for pedestrian use only.
- Outdoor use only.
- Raises the height of the riser by 10 mm.
- Adapt the plate position according to the installation.
- Always follow paving manufacturer recommendations to ensure the suitability of paving products for use with riser pedestals and the number of risers per m<sup>2</sup> to use. Qualification of compulsory "SELF-SUPPORTING" slabs, of class T7, T11 according to standard EN 1339:2004-02.
- Can be used with standard and self-levelling CLEMAN® risers, except Cleman® riser 28/40.
- Provide one side finishing plate per periphery riser.
- For IFU, see the website.



## TECHNICAL DETAILS

- Material: recycled polypropylene
- Colour: black
- Dimensions: 219 mm x 219 mm
- Spacers thickness: 4 mm
- Weight: 216 g
- Resistance to temperature from -30°C to +60°C
- UV and frost resistant

## PACKING

- Box of 10 parts (80 boxes per pallet - stackable)

Document protected by copyright. Any reproduction, copy, extraction, reuse in others publications, translation or adaptation, display, distribution or modification, in whole or in part, without the written consent of TMP CONVERT is strictly prohibited and will be sanctioned. TMP CONVERT reserves the right to add, modify or delete information to any time without warning.



www.jouplast.com



FT\_CLEPLA\_2304\_EN